

A boiler breakdown rarely occurs at a easy second. It shall be 6.30 pm on a chilly nighttime, while you simply favor sizzling water and a shower. Or it may well be the "it's positive but now not distinctly excellent" location, the place the heating takes longer to heat up, the force assists in keeping drifting, or you hear a new noise that wasn't there remaining week.

Having a sensible boiler fix list in your head helps in two tactics. First, it helps you to separate glaring person subject matters from faults that may want to move instantly to a skilled. Second, it helps you communicate evidently to a plumber or gas engineer, so you get the correct form of Boiler Service, no longer a rushed, gussy reaction.

Below is a close, genuine-international checklist of easy faults and the restore features that characteristically make sense. I'll also encompass a couple of safe practices and "don't make it worse" notes, given that boilers are undemanding unless they may be not.



## Start with the properly questions (and the suitable type of alarm)

Before you contact anything else, it allows to recognise what the boiler is telling you. Most contemporary boilers monitor fault codes, and lots of may also difference how the formula behaves. Some disasters block ignition directly. Others beginning up, run temporarily, then close down. Still others are "low output" lawsuits, in which the boiler is firing however now not doing the activity.

If you're managing a Gas safe practices certificate issue, a Gas security look at various is break away fix. A restoration should still make the equipment safe and solid first. Then, if it's time for the yearly payment, that need to apply.

Here are the questions I ask in my head, whether I'm now not the engineer doing the paintings:

- Is it heating simply, hot water basically, or either?
- Does it fail to ignite, or does it ignite then forestall?
- What happens to the boiler rigidity when the fault occurs?
- Any bizarre smells, soot, or condensation where it shouldn't be?

That final one concerns. A mighty smell of gasoline, black staining, or repeated ignition attempts with a scent of combustion merchandise are "stop and make contact with" signals, not "permit's see if it clears"

signs.

## **Electrical and handle basics one can investigate safely**

A outstanding wide variety of troubles usually are not a mystery aspect. They are traditionally electrical deliver, controls, or trouble-free configuration worries. On any other hand, a boiler isn't really a DIY toy, and you could forestall something that involves commencing sealed covers or bypassing protection contraptions.

Still, you're able to do a couple of secure, sensible tests.

If the boiler has no persistent at all, observe the wall swap and any isolator close the boiler. Check the thermostat and programmer, notably when you have a time time table that recently transformed. If the heating is determined to "off," which you can turn out to be diagnosing a boiler that may be in fact behaving safely.

If you spot an errors code, be aware it down. Tell your Gas Fire Service or Gas boiler engineer what it says, considering the fact that fault codes slender down the checklist quickly. If the problem started out after somebody shut a valve, did preservation paintings, or transformed radiators, mention that too.

## **Pressure troubles: the maximum popular "it's no longer damaged, it's just low" situation**

Low machine strain is among the so much widely wide-spread boiler breakdown explanations. It steadily suggests up as a boiler for you to now not bounce, or it begins then stops, or the display screen tells you to good up.

The restoration selection is most likely to repressurise the approach competently, however the key element is forever why the power dropped. If you simply most sensible it up devoid of searching the leak resource, you can actually avert repeating the equal cycle. In some instances, a small leak may very well be hidden in pipework lower than ground or at the back of a wall boxing.

If the boiler is wasting stress sometimes, anticipate the carrier to embody power assessments and a leak investigation earlier portions are ordered. Sometimes the leak is in a radiator valve, every so often it can be a stuck or failing filling loop, and often it's miles interior to the boiler machine.

A similar scenario is whilst tension is just too top, not too low. Overpressure can occur after flawed filling, a failed force alleviation valve, or enlargement vessel troubles. The boiler may possibly behave strangely or discharge water. That's no longer a "hold an eye on it" obstacle considering discharge can comply with with inside headaches.

## **Ignition faults: when the boiler received't light**

Ignition complications can sound dramatic, but they are incessantly traceable. The boiler may possibly try and ignite various instances after which lock out. The restore selection is constantly diagnostics round gas provide, air offer (for flue or balanced flues), and ignition areas.

Typical participants incorporate:

- a dilemma with the gas deliver at the meter or isolator
- a misguided ignition electrode or ignition lead

- combustion air or flue fuel problems, like a blocked flue terminal or unsuitable clearances
- condensation-related issues in chilly spells, principally wherein condensate drainage is sluggish or in part blocked

If you're simply by LPG, consider that the process configuration would have to tournament the gasoline source and burner settings. LPG boilers should be would be could very well be completely dependable and helpful, however they desire excellent setup. The restore alternative for an ignition fault ought to perpetually consist of verifying the right kind gasoline kind and making certain the gasoline engineer tests pressures in the estimated quantity on your setup.

You can be tempted to reset the boiler persistently. Some engineers dislike unending reboots in view that they could mask the underlying intent. A reset is affordable if it's a one-off glitch, yet if the same ignition fault returns effortlessly, it's more suitable to log the behaviour and ebook Boiler Repair.

## **Faults with scorching water best: diverter valve, plate warm exchanger, or flow flow**

A favourite sample is "heating works, warm water does no longer" or the reverse. That allows narrow down what to research.

For hot water considerations, two popular suspects are the diverter valve (in many combi boiler setups) and the warmth exchanger or same inside resources. If scorching water is lukewarm, intermittent, or slow to run, the engineer may possibly try out go with the flow fees, fee for scale buildup, and check up on sensors.

One reasonable point that impacts outcomes is whether your formula has noticeable laborious water or long intervals of low usage. Scale is a factual component. In some areas, it's miles dramatic satisfactory that a Power Flush turns into a dialogue, not only a buzzword.

However, a continual flush seriously isn't robotically the following step for each and every fault. It is a selected cure to enhance move and take away sludge and debris. If the complication is in fact a failed sensor, a caught valve, or a warmth exchanger blockage, flushing won't restore it, or it may simply partially assistance. A solid Boiler Service will diagnose sooner than recommending the flush.

If warm water starts offevolved best but drops off after a brief era, which will propose glide regulations or inside overall performance concerns. If hot water fails totally but heating runs, the fault shall be pushed by the home sizzling water facet formulation in place of the heating circuit.

## **No heating, sizzling water works: flow and controls traditionally take the lead**

When the boiler produces scorching water however no longer principal heating, it traditionally issues towards the heating aspect. The engineer incessantly exams whether the heating procedure calls for warmth effectively. That can contain room thermostat function, area valves (if equipped), cylinder or programmer settings, and pump operation.

If you hear the pump delivery yet radiators reside bloodless, the problem may also be stream connected. If radiators are hot on the boiler but chilly someplace else, the engineer may suspect air locks or balancing disorders. If the process has been lately drained or altered, air is a realistic culprit.

If you have a time-honored format with a warm water cylinder and you're occupied with greater troublesome paintings, it will overlap with other Plumbing and heating equipment exams. The exceptional approach is to

evaluate technique behaviour first, then figure out even if cleaning, de-airing, or inside issue replacement is extra impressive.

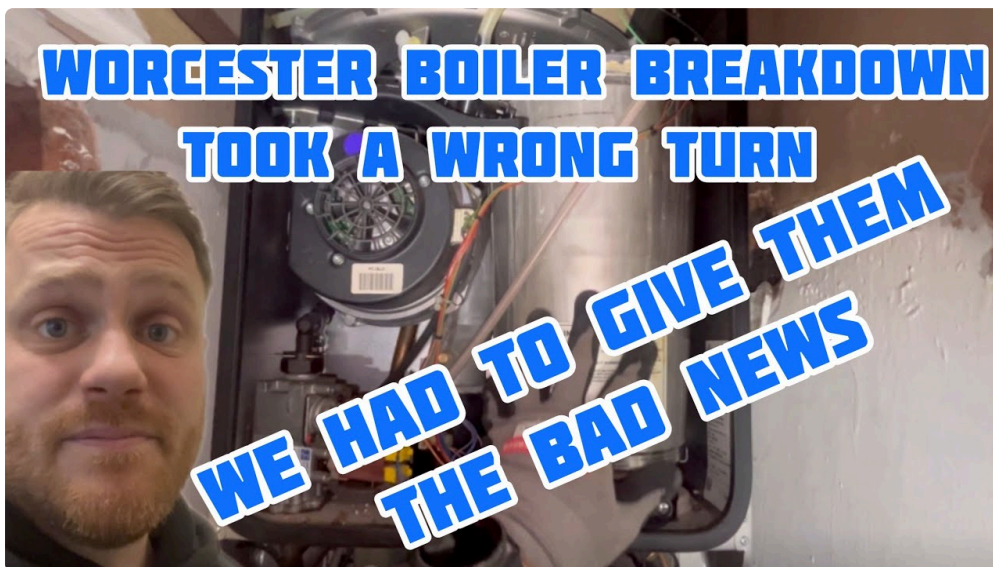
## Radiators no longer warming frivolously: bleeding, balancing, and sludge

Odd heating distribution has a few hassle-free causes. Some are uncomplicated, some are structural.

A radiator which is chilly on the suitable but warm at the lowest most likely suggests air. A radiator which is warm handiest at one stop can imply sludge in the pipe run. If more than one radiators behave badly on the similar time, it may very well be a approach float subject, now not a single valve.

The restoration alternative relies upon on analysis. Bleeding can resolve air locks, and in older programs it's a time-honored repairs step. Sludge removing may perhaps require flushing or a more certain refreshing. If the boiler is suffering to flow into and the heating output is reduced, an engineer may well focus on Power Flush, especially if the formulation has thickened sludge and decreased go with the flow.

Trade-off-wise, a drive flush shall be messy and calls for careful handling. It may also require manner chemical medicine afterwards. That is why the superior engineers inspect for sludge symptoms and stream impairment prior to leaping straight to it. The purpose isn't very to "flush because we can," it really is to repair efficiency thoroughly.



## Strange noises: kettling, banging, and move issues

Boilers tell reviews thru sound. "Kettling" is the most well-knownshows one. It seems like boiling water or a rumbling contained in the warmth exchanger. Kettling may also be resulting from scale buildup, decreased move, or restrained move.

A restore selection for kettling in most cases contains checking the flow manner, radiator movement, and even if scale has outfitted up in the warmth exchanger. If the boiler retains kettling after innovations to circulation, the engineer may just advocate a factor-targeted restore or, in some situations, substitute based on age and severity.

Banging noises can indicate air, circulation trouble, or pressure themes. While bleeding radiators is a simple step, repeated banging may still not be pushed aside. If a boiler is working out of doors of stable pass, wear and tear increases.

If you've gotten ever had a boiler start off banging the instant it fires, you already know the nervousness factor. It's no longer near to alleviation, it's approximately lengthy-term reliability.

## **Leaks: from seen drips to hidden trouble**

Leaks are available in many forms. Some are apparent, like water beneath the boiler or wet pipework. Others are diffused, and the strain drop tells the tale.

If you detect a leak, the true first motion is to give up via the approach if it can be considerable, then call for inspection. Water round electrics or ignition formula will not be a possibility really worth playing with. Leaks can also involve condensate drainage. In condensing boilers, condensate is common, yet it would have to drain adequately and now not break out into puts it shouldn't.

Fix ideas for leaks include repairing a failed seal, exchanging a valve, addressing a pipe joint, or coping with interior boiler additives. Your engineer ought to additionally establish why the leak befell. A worn gasket may perhaps fail once again if the underlying result in is high force or temperature rigidity.

## **Condensate and flue points: the bloodless-climate trap**

Condensing boilers create condensate. In popular prerequisites, that condensate drains away because of a small pipe run and neutralisation strategy if considered necessary. In cold spells, condensate can freeze if the drainage path is poorly insulated, blocked, or too lengthy.

When condensate fails, boilers can even lock out. Some house owners observe a "no hot water" or "no heating" hindrance, then realize the boiler's reveal guidelines at a drainage or fault condition.

Flue disorders can be connected too, exceptionally the place the termination has been blocked through plant life, built-up particles, or production resources. A flue concern is protection-extreme, so the fix preference in many instances consists of inspection and remedial work instead of repeated resets.

If you've received a hectic household, it is also where the "it labored the day past" frustration peaks. Condensate and flue behaviour can shift at once with temperature swings.

## **When a Gas Fire Service, Gas Cooker Installation, or Air Conditioning has relevance**

These systems are extraordinary, however they percentage real looking realities.

During a Gas Fire Service, engineers quite often inspect ventilation paths and combustion air prerequisites. If your own home additionally has different combustion appliances, a blockage, negative ventilation, or improper setting up can have an impact on performance and safe practices. That approach when you've got a gasoline hearth, it may well be appropriate to boiler indications like slow ignition or recurring lockouts.

Gas Cooker Installation is identical. While a cooker fault does not ordinarily cause a boiler fault straight away, it may well element to wider gasoline provide fitness. If you odor gas whilst because of the cooker, or if there's an ongoing gasoline first-rate limitation, it really is predominant context for any boiler repair.

Aircon and Air Conditioning structures may affect the timing of signs. For instance, in case you run airflow-heavy techniques or trade ventilation exercises, one can note drafts or condensation styles that make the boiler setting think the several. This is simply not an instantaneous lead to in so much circumstances, however it may possibly support explain why the "same boiler, extraordinary season" feeling is genuine.

For commercial web sites, like a burger van gas setup, the stakes repeatedly fluctuate. You would have regular on-off operation, variable flue conditions, and bigger usage. In the ones scenarios, the thought of "look at various the fundamentals first" is even more really good. A authentic carrier time table and right kind Gas safety certificates documentation subject due to the fact that downtime is lost profit, and safety worries won't be negotiated.

## **Should you fix, provider, or substitute?**

This question comes up speedy while you get a quote. Boiler Repair and Boiler Service are part of the comparable ecosystem, yet they're not same choices.

A repair is recurrently useful whilst the boiler is particularly new, the difficulty is different, and the leisure of the appliance seems to be fit. A service enables protect reliability and catches early warning indicators, like deterioration of combustion aspects, flue and sealing considerations, or signs of inner wear.

Replacement enters the verbal exchange whilst a couple of faults manifest, while maintenance turned into widely used, or while the boiler is previous sufficient that materials availability and effectivity matters was extra giant. Efficiency can be counted for convenience and bills, but that's the reliability and safe practices song that should lead.

A exceptional way to pass judgement on the alternate-off is to ask the engineer for a "faults and risk" explanation, no longer only a areas record. What failed, what else would possibly fail subsequent, and what may beef up reliability lengthy-term? If you get a transparent, grounded answer, you're in a superior location to come to a decision.

## **Fix strategies that arise occasionally (and what to watch for)**

Here are the such a lot wide-spread fix preferences you would possibly pay attention from a able engineer. I'm phraseology these as concepts when you consider that at times the "most sensible" determination is dependent on the boiler style, device age, and no matter if different considerations exist.

A factor replacement system is commonly used for ignition ingredients, sensors, diverter valves, pumps, and drive-same system. A process refreshing will be really helpful whilst sludge or scale is suspected. In some circumstances, a Power Flush is recommended to repair move, certainly in which flow functionality and radiator behaviour coach indications of particles build-up.

If the issue is brought on by terrible deploy, incorrectly attached pipework, or a condensate drainage course that is not desirable, then the restore alternative could contain re-routing or upgrading that course other than chasing interior boiler portions.

If you've gotten an older assets, the method might not match cutting-edge most useful exercise. You may need balancing transformations, gadget enhancements, or enhancements to insulation. The engineer must always provide an explanation for the "why" at the back of concepts, now not simply the "what."

## **A reasonable boiler breakdown listing you possibly can use immediately**

When the boiler stops operating, the most necessary factor you can do is cut down uncertainty and avert unintentional harm. This short guidelines is designed for the primary call, previously an engineer arrives.

## Immediate tests (until now booking)

1. Check the boiler monitor for a fault code and note it down.
2. Confirm the wall switch and any isolator are on, and that the thermostat is asking for warmth.
3. Look for glaring themes like a tripped fuse, loss of mains electricity, or a grew to become-off gasoline valve.
4. Check method drive in case your sort facilitates it, and take into account regardless of whether it was once already low.
5. If you odor fuel or see heavy soot staining, stop and get assistance urgently.

That's the "do now" institution. Everything else is diagnosis, and diagnosis is the place a legit earns their commission.

## What an outstanding Boiler Service or Boiler Repair ordinarily includes

Some worker's imagine a carrier as a short exterior seem to be and a chemical sniff. In certainty, a respectable Boiler Service is methodical. It checks combustion efficiency the place relevant, verifies reliable operation, and inspects key materials for deterioration.

During a service or a restoration go to, be expecting the engineer to:

- ascertain reliable ignition and steady operation
- investigate flue circumstance and sealing, exceptionally around joints and terminals
- experiment suitable sensors and safe practices mechanisms
- confirm gasoline pressures and combustion characteristics the place equipment and laws require it
- examine manner efficiency, inclusive of circulate and pressure stability

A Gas safety certificates is a proper results of a Gas protection payment, and the engineer will have to provide an explanation for what was assessed and what was once stumbled on. If anything else is unsafe or demands pressing focus, it needs to be communicated certainly.

## Common eventualities and real looking restore paths

Sometimes, the "desirable reply" isn't a one-dimension-suits-all repair. It's a trail established on what you see.

### Scenario: stress drops again inside days

This routinely features to a leak or a fault within the drive-related formulation. The fix choice incessantly comprises leak detection first. Only when you have in mind the place water is going should always you in deciding on ingredients. Repeated excellent-america with no analysis is the line to dear repeat callouts.

### Scenario: boiler ignites but locks out after a brief time

That sample pretty much aspects to ignition steadiness, gas provide, flue and air concerns, or condensate drainage disorders. If it fails immediately, the engineer will have to take a look at the prerequisites that exist currently of lockout, now not just run a prevalent set of checks.

### Scenario: kettling and deficient warmth output

Scale and restrained waft more commonly look mutually. The fix choice may additionally embrace cleaning or descaling steps, circulation enhancements, or interior thing repair. If radiators are also no longer warming frivolously, a procedure fresh will become more achievable than exchanging a element blindly.

## **Scenario: heating works, scorching water is poor**

This in general leads closer to diverter and household warm water efficiency tests. Heat exchanger scale is a habitual subject matter in some homes, in which dissolved minerals build up. A Power Flush may also be portion of the wider story, yet simply if exams factor that approach.

## **How to ward off making matters worse whilst looking forward to a professional**

While you look forward to Boiler Repair, there are several behaviours that may minimize rigidity and save you more break.

Don't prevent resetting a boiler that in many instances locks out, primarily in case you have a brand new odor or soot staining. Don't over-accurate up the pressure past what your manner guidance states. Too a lot stress can cause comfort valve discharge and create similarly mess.

Also, retailer the aspect round the boiler clean. If you've got a cabinet or boxing in area, confirm vents are unobstructed the place perfect. Poor air flow can make combustion-connected faults more likely.

If you live in a apartment property, report the issue instantly and continue a checklist of fault codes and dates. It supports the engineer, and it allows you.

## **Choosing the perfect enhance: plumber, fuel engineer, and what to ask**

When you name for aid, it pays to be specific. You can describe symptoms, and one can mention what you already checked. Mention whether or not the issue is heating, scorching water, or both, and share any fault code.

If your technique is fuelled with the aid of LPG, say so. The same you probably have wonderful commercial usage like a burger van fuel setup. Engineers who care for those methods frequently will ask the different questions and will arrive with the precise resources.

If your home incorporates Gas safety certificates documentation needs for landlord or commercial compliance, ask how they take care of documentation. A ready engineer shall be clean on timelines and office work.

And if the restoration may just involve Plumbing paintings, like pipe leak upkeep or approach alterations, ask whether or not they coordinate the plumbing phase or regardless of whether the paintings is inside their scope. Clear responsibility avoids duplicated callouts.

## **Final proposal on approach: restoration the cause, no longer just the symptom**

A boiler can oftentimes be made to paintings lower back with the "straight forward fix" way: a reset, a repressurise, a speedy air bleed. Those steps will not be unsuitable, but they may be not the whole task.

The highest influence come from a trigger-first approach. Pressure drops inform you to find the leak. Kettling tells you to review move and scale. Ignition lockouts let you [Gas Cooker Installation Essex](#) know to examine gasoline supply, air and flue conditions, and protection add-ons. When those basics are addressed, reliability improves and you get fewer repeat breakdowns.

If you ever would like a functional rule of thumb, it's this: treat repeated behaviour as info. A one-off fault will likely be a glitch. A pattern is a prognosis waiting to occur.