

Benfleet summers should be a bit sneaky. Some days you get suitable humidity straight from the ocean, different days [Air Conditioning Benfleet](#) it's simply heat sufficient to make sleep really feel like complicated work. Either way, the moment you notice you're remaining curtains at midday, you start involved in Air Conditioning in Benfleet, and now not in a vague "perhaps at some point" method.

The challenging bit is that aircon isn't one-dimension-fits-all. The appropriate approach relies on your room layout, insulation, in which the sunlight hits, what you truthfully use at night time, and what kind of you need to tinker. If you choose simply structured on continual ratings or what your neighbour mounted, possible emerge as paying extra than you want, or worse, procuring something that doesn't suit how your private home behaves.

Let me walk as a result of how I consider it, what I seek for in the authentic international, and tips on how to stay away from the maximum user-friendly mistakes.

## Start with how your own home correctly receives hot

People probably question me regardless of whether they have to go for "a giant unit" or "a smaller one". My solution is assuredly, "a enormous unit the place, precisely?"

Hot spots count. A living room that receives blasted via afternoon sun is a the different subject to a hallway that stays truly stable. In Benfleet, in which coastal heat can loaf around, the change turns into transparent when you've had just a few days of sustained warmth. The room that feels the worst at 6 pm is infrequently the room you'd expect when every little thing remains secure within the morning.

A good first step is to pay concentration for an afternoon or two:

- Which room do you favor cool first?
- Which room will become unbearable quickest?
- Is the heat more often than not from sunlight, stuffiness, or both?
- Do you work at home in one house, or do you start round?

When you resolution the ones questions, the machine preference receives clearer promptly. Most homes are enormously fixing one or two remedy problems, now not cooling the complete belongings to the identical temperature.



# The two extensive different types: unmarried-room consolation vs entire-homestead cooling

When other folks say "air-con", they would suggest anything else from a wall unit in the bedroom to an outside compressor feeding dissimilar rooms. In follow, you're settling on among these systems:

## Multi-cut up and single cut up (room by means of room, with regulate)

Single-split techniques cool one room. Multi-cut up approaches use one outdoor unit linked to two or extra indoor contraptions in unique rooms. The upside is you can actually run most effective the rooms you're utilizing, that is on the whole what workers prefer in precise existence.

## Portable and ceiling chances (most likely convenient, once in a while restricted)

Portable instruments are tempting considering they look "straightforward". But whenever you've ever sat near one whilst it's operating, you'll understand they would be noisy and much less green than mounted structures. Ceiling devices exist too, however they're a extra specialized course and matter heavily on your house and install formulation.

If your purpose is smooth sleep in a single or two rooms, a set wall-fixed process is probably the candy spot. If you genuinely need more, multi-split will become the shrewd upgrade.

## What to put in relies for your layout and the way you live

Benfleet houses range rather a lot. Some are more recent and more desirable insulated, some are older with awkward inner layouts, some are semi-detached with shared partitions, and a few are detached with vast open-plan areas.

I generally tend to neighborhood the selections into about a ordinary eventualities.

## Bedrooms first: where sleep easily receives gained or lost

If your most important anguish element is waking up sweaty, the bed room setup need to come first. A wall-fastened unit within the bedroom offers you the talent to govern temperature even as you sleep, and that you may pair it with timers so it runs earlier than you get into bed after which cycles to secure.

A lot of folk complication approximately noise. The certainty is that modern-day wall sets are almost always rather quiet on popular sleep modes, but "quiet" is relative. If you're a faded sleeper, you'll favor to ponder the place the indoor unit sits and the way the airflow direction works.

One rule of thumb I've found out the arduous approach: stay away from blasting bloodless air quickly across where your frame lies if which you could. It can experience disagreeable although the room is technically at a snug temperature.

## Open-plan lounges: cool air has to shuttle, and it loses momentum

Open-plan spaces will likely be complicated seeing that they join the kitchen, dining, lounge, and infrequently hall parts. Cooling one nook received't magically cool the total extent at the identical charge. In an open-plan residence, you either accept slower, more gradual cooling, or you plan distinctive indoor gadgets.

If your front room is colossal and open, you'll seemingly be more desirable off with both:

- numerous indoor heads, or
- one properly sized unit located strategically so it pushes airflow throughout the room

The mistaken placement could make it believe like the air isn't accomplishing you, besides the fact that the sensor analyzing says the entirety is wonderful.

## **Hallways and downstairs movement: steadily ignored, generally worthy it**

People chase the living room and bedroom first, then marvel why downstairs still feels heat at the same time the bedroom is secure. In many homes, warm temperature travels by door openings and hall drift. Cooling just one room doesn't invariably forestall that "hot air creep".

If you spend time downstairs in the daylight hours, take note of whether or not you want a 2d indoor unit for both the key living place or a key circulation house.

## **Sizing: don't simply pick out what sounds powerful**

This is the facet where issues get mis-sold. Some installers size through a hard guess. Others length top through warmth load calculations founded on insulation, glazing, room size, and solar acquire. If you're making a choice on a formula for alleviation, now not just for "anything that blows cold air", genuine sizing matters.

Here's the change-off in undeniable phrases:

- Oversized structures can cool instant, yet they can cycle extra on the whole and struggle to take care of humidity manage. You can grow to be feeling cold however nevertheless a little clammy.
- Undersized structures run longer, certainly not relatively catch up, and make you suppose like the computing device is "now not operating", even though it is working as onerous as it would.

In coastal areas like Benfleet, humidity is a mammoth deal. A equipment that handles moisture neatly can really feel more glad than person who best chases temperature numbers.

If you're able to, ask how they're sizing the unit. You desire a dialog approximately your express room, no longer a one-line recommendation.

## **Efficiency and walking prices: what subjects day to day**

People on the whole would like to comprehend, "How tons will it fee me?" The so much sincere reply is that it is dependent at the unit, the insulation, how lengthy you run it, and the outdoor conditions. But you are able to nevertheless make good judgements that store jogging quotes underneath control.

A few useful angles that lend a hand:

### **Use the excellent temperature settings**

Set it too low and you'll pay for the extra cooling although the method runs rough. Set it too top and you may nevertheless feel humid ache. Most individuals grow to be happiest someplace in a moderate number, and the process maintains rather than struggles.

### **Prefer upkeep and refreshing filters**

If the indoor filters get clogged, airflow drops and potency suffers. It's an hassle-free repair, but it's additionally some thing that will get passed over. Every few months, verify and blank as the corporation recommends.

## **Think about solar exposure**

If your important room has full-size south or west-dealing with windows, warm positive factors can spike inside the afternoon. Curtains and blinds make a titanic change, and that they reduce how difficult the AC has to work. In Benfleet, that afternoon heat can linger, so shading facilitates all day.

## **Timers beat "consistent jogging"**

Running invariably can think intuitive, but timers and zoning quite often work greater in truly lifestyles. Pre-cool a room should you're dwelling house and then use sleep mode or renovation settings overnight. It maintains the trip snug devoid of leaving the gadget to slog simply by empty hours.

## **Installation decisions: where sets move and why it influences performance**

With fixed approaches, the installing facts should not minor. They have an impact on airflow, sound, aesthetics, and repeatedly even how smartly the equipment drains condensation.

### **Indoor head placement**

You favor proper movement devoid of directing chilly air where you take a seat or lie. Many wall units can swing or direct airflow, however the great convenience comes from mounting region and perspective.

Also do not forget how near the unit is to beds, sofas, and doorways. If it's too close, you might get drafts. Too a long way, and it's possible you'll experience the room is not ever honestly cooling.

### **Outdoor unit location**

The backyard compressor wants suitable airflow and area for protection get entry to. It also wishes to be positioned so the noise is absolutely not worrying. In terraces and semi-detached houses, this will become pretty very good in view that neighbours listen belongings you don't.

If you're in a garden with walls around it, airflow to the outdoors unit will probably be affected. That's not a deal breaker, but it's anything to plot as opposed to guess.

### **Drainage and condensation**

Air conditioning removes moisture as it cools. That moisture has to move somewhere, traditionally by way of drainage pipework. A wonderful installer plans the course cleanly and avoids awkward bends that will cause trouble through the years.

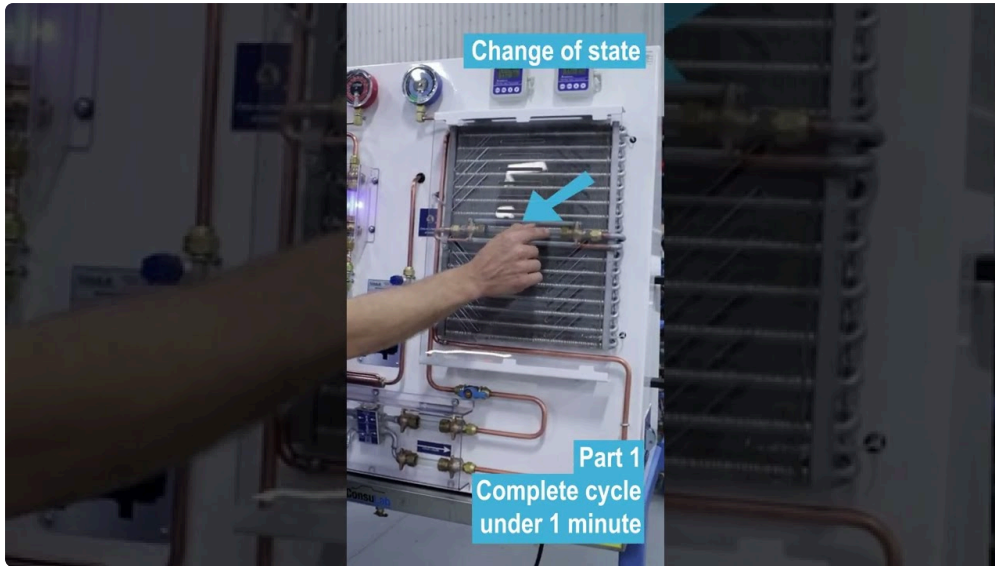
## **Types of tactics, what I'd decide on, and the place each makes sense**

Let's get reasonable. Here are the machine types men and women believe, what they're top at, and what can annoy you if your expectations are off.

### **Wall-fixed cut up systems**

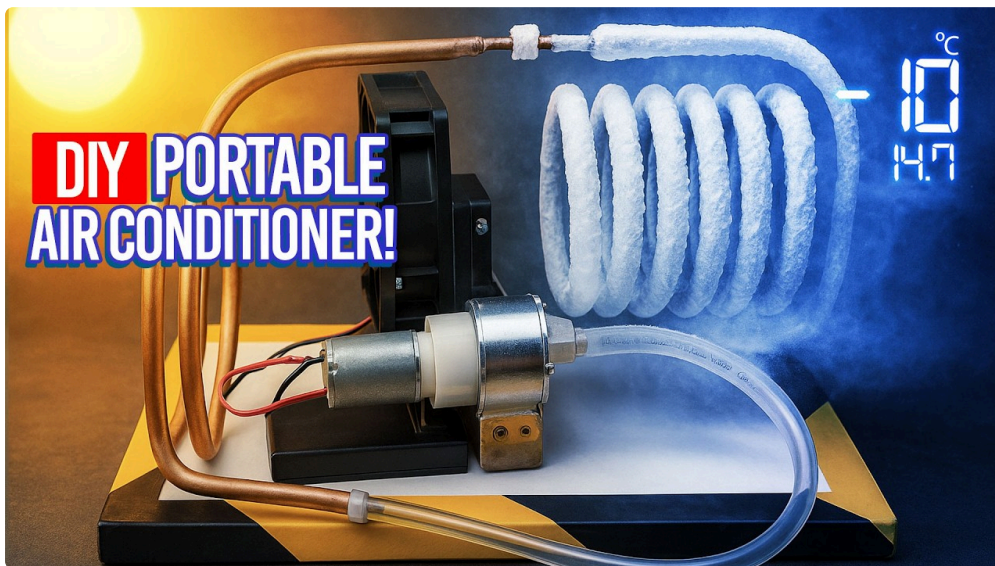
These are the traditional selection for bedrooms and lounges. They're fairly discreet, helpful, and simple to perform.

They work finest in case you choose one room to be desirable smooth. If you're trying to cool a number of rooms which can be connected and you store doors open, it is easy to turn out desiring multiple indoor head.



## Multi-split systems

Multi-cut up models shine whilst you choose separate keep watch over for distinctive rooms devoid of putting in separate outdoor gadgets. This can decrease open air litter, and you'll be able to go with which rooms to run.



The compromise is that you just're nonetheless dependent on one outdoors unit ability shared throughout the hooked up indoor heads. In peak prerequisites, jogging a couple of rooms instantly may well reduce overall performance, so it's well worth eager about your doubtless usage styles.

## Whole-house treatments (ducted or more large setups)

Some homes can manage ducted systems nicely, extraordinarily the place you're doing renovations. But for a lot of in style residences, the disruption, expense, and design constraints make different systems extra

captivating.

Whole-homestead cooling is appropriate should you in actual fact choose uniform remedy across many rooms. It's less top notch if you happen to simply wish detailed cooling in two areas.

## **Noise and comfort: the belongings you simply observe once it's installed**

Noise is one of these "you received't take into consideration it until eventually you are living with it" elements. Even if the unit is not loud, it may very well be put the place you listen it all nighttime, or it can blow directly throughout your pillow.

Here's what I advocate headquartered on true living:

- If the bedroom unit is going in, prioritise quieter operation and airflow direction over highest vigour.
- Avoid placing airflow so it hits where you sleep. Even a mild breeze can believe less warm than you expect.
- Make positive that you could still get right of entry to controls effectively. A system you don't like the use of gets run much less efficiently simply because you find yourself improvising.

Also, give some thought to when the equipment will cycle. Some employees realize biking extra than airflow noise. The solution is generally properly sizing and very good manipulate modes.

## **Thermostat behaviour: the distinction between feeling cool and truly feeling comfortable**

Temperature is in simple terms 1/2 the story. Comfort is likewise approximately humidity and how simply the room responds.

A neatly-selected machine does this:

- drops temperature to a comfortable level
- reduces humidity so it feels less sticky
- then keeps with out high swings

A poorly matched process can either cool too aggressively, leaving you feeling chilly and dry in a single second, then clammy back later. Or it could possibly cool slowly and leave you sweating as a result of the most well liked hours.

This is an alternate explanation why I like sizing depending on warmness load in place of guesses. The "really feel" end result matters.

## **Controls and intelligent facets: functional, however not the key event**

Many innovative tactics include Wi-Fi control and app timers. That's easy, primarily when you're out and desire to pre-cool.

But don't purchase the gadget because it has an app. Buy it since it cools correctly and suits your rooms. The app just is helping you operate it smarter.

If you do cross for smart regulate, payment:

- how responsive the gadget is if you happen to're off-site
- whether or not you can set timers in a method that matches your schedule
- the way it behaves when you lose Wi-Fi or power

A physically powerful far off regulate trip is best, but day-to-day you'll be utilising the wall far off or regional controls besides.

## **A short decision course you are able to truly use**

If you're watching alternatives and attempting to slender them down, the following's the way I'd take up a consultation, simplified.

1. Pick your priority rooms. Decide which rooms want comfort for the period of height Benfleet warmth, not all rooms right away.
2. Match components kind to that precedence. One room, reflect onconsideration on a unmarried break up. Two or greater key rooms, don't forget multi-cut up.
3. Get sizing appropriate. Ask approximately warm load pondering, insulation, and photo voltaic publicity in preference to a guess.
4. Plan placement for convenience and airflow. Avoid direct drafts, imagine the place you sit and sleep.
5. Confirm deploy data. Noise location, drainage path, and outdoors unit airflow deserve to all be viewed earlier you assert definite.

That's it. If you follow those steps, you'll keep eighty % of the inaccurate alternatives.

## **Maintenance: small habits that keep large headaches**

Air conditioning seriously is not a "fit and forget continuously" machine. It can nevertheless run easily with trouble-free care, and the effort is mostly smaller than other people assume.

### **Filters and airflow**

Clean or exchange filters according to the company's assistance. Dust build-up reduces airflow and makes the device work more difficult. It could also shrink the quality of air flow, which topics in case you have allergies.

### **Condensate management**

If the drainage path receives blocked, you can actually get efficiency matters or water concerns. It's no longer a thing you want to troubleshoot inside the center of a heatwave.

A fast seasonal take a look at, preferably in the past summer really hits, prevents emergency calls later.

### **Outdoor unit care**

The out of doors unit necessities clearance around it so it's going to breathe. Leaves, particles, and overgrown plants can scale down airflow. You don't need to obsess over it, just maintain it real looking.

## **Choosing an installer in Benfleet: the genuine differentiator**

Here's the certainty: the machine concerns, but the install things simply as tons, typically more. A fantastic unit established badly will underperform. A good unit hooked up effectively can experience satisfactory.

When you talk to installers, I'd concentrate for some indicators of competence:

- They ask questions about rooms and usage, not just the variety of bedrooms.
- They talk about airflow direction, pipe routing, and noise planning.
- They are happy discussing sizing and how they're deciding upon it.
- They clarify repairs and filter get entry to obviously.

If you get obscure solutions or they push you towards the similar procedure regardless of belongings changes, that's a red flag.

And certain, value concerns. But if the present is vastly less expensive than comparable quotes, ask why. Sometimes it's nice. Sometimes it's the place corners have been cut, and those corners have a tendency to expose up later.

## **Common "Benfleet heatwave" eventualities and what I'd do**

To make this feel much less summary, here are just a few lived-in scenarios that exhibit up over and over.

### **Scenario 1: "We in simple terms desire the bedroom cool at night time"**

Go for a wall-set up split within the bedroom. Use a timer so it runs before mattress, then set to a stable sleep mode instead of intense cooling. You'll possible get stronger alleviation and lessen working prices than looking to blast it all day.

### **Scenario 2: "The front room is first-class inside the morning, however it's unbearable after lunch"**

You possibly have important sunlight attain. In this example, window shading supports, but you still favor a machine sized to deal with night warm load. Consider airflow placement to make sure movement reaches wherein you take a seat, no longer simply where the unit blows.

If the living room connects in an instant into eating and kitchen, assume moderately approximately whether one head is ample. Sometimes it truly is. Sometimes it's now not, and the components spends a good number of time looking.

### **Scenario 3: "We need downstairs secure, however the upstairs can stay hotter"**

This is the place two procedures, or a multi-break up setup, will become horny. Run what you utilize, whilst you operate it. Comfort is ready in which you spend time, not approximately cooling air in the time of the comprehensive house.

### **Scenario four: "We're in a semi or terrace, and noise issues"**

Prioritise indoor placement and take into consideration outside unit place conscientiously. A ready installer will take into consideration neighbour effect and operational noise, not just aesthetics.

If you're opting for among two identical overall performance sets, I'd incessantly select the single with more desirable quiet operation qualities on your utilization, even though it expenses fairly greater.

## **So, what should you decide? A few grounded principles**

If you favor a user-friendly method to prevent your choice functional, center of attention on those standards other than getting lost in specifications.

First, decide which rooms one could really cool maximum days. Second, confirm the formula is thoroughly sized for your private home's warmth behaviour. Third, prioritise remedy and humidity handle, now not just temperature drops.

And don't ignore the fundamentals, curtains, blinds, and hobbies protection. On humid days, these small steps can extraordinarily shrink the load on the components, which mainly approach diminish strolling expenses and greater solid alleviation.

That's the authentic win with Air Conditioning in Benfleet. Not just "bloodless air", but predictable, delicate rooms whilst the weather comes to a decision to be obdurate.

## **A very last inspiration sooner than you publication anything**

If you're planning to install aircon this 12 months, check out not to leave it till the hottest week. The distinction among installing in spring versus mid-heatwave is basically availability and determination pressure. You prefer time for prices, site visits, and proper planning, pretty in the event you're thinking about a multi-cut up setup otherwise you want pipe routing that looks neat.

Get the appropriate room plan, get intelligent sizing, and pick placement with the way you reside in mind. Do that, and you'll suppose the benefit anytime Benfleet does what it does in summer season, hot air, coastal humidity, and all.